

Installation – Windows

Minimum System Requirements

- Windows XP (Service Pack 1)
- Intel Pentium III or equivalent processor
- 128MB of ram
- USB 2.0 Port (*The camera will not work on a standard USB 1.1 port*)

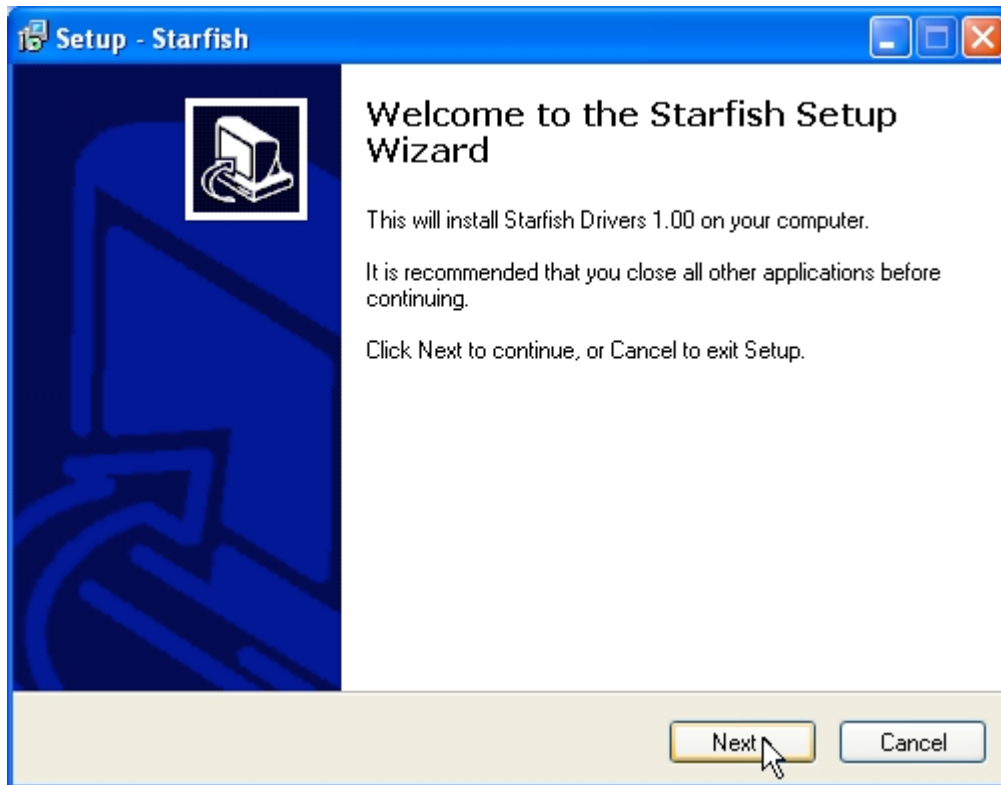
Starfish driver installation is a **two step process** for Windows operating systems.

Step 1:

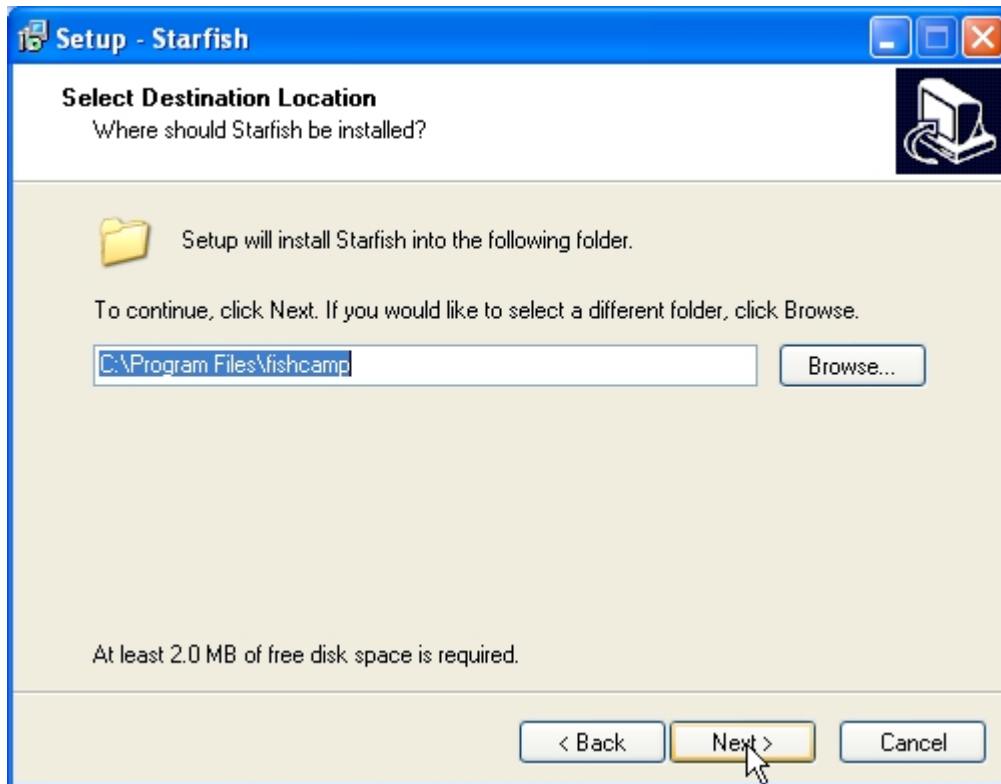
The first step is to run the .exe installer that comes on the CD-ROM included with the camera. *This should occur before plugging in the camera to the computer.* The installer can be found in the PC directory on the CD:

D:\PC\Starfish_Setup.exe

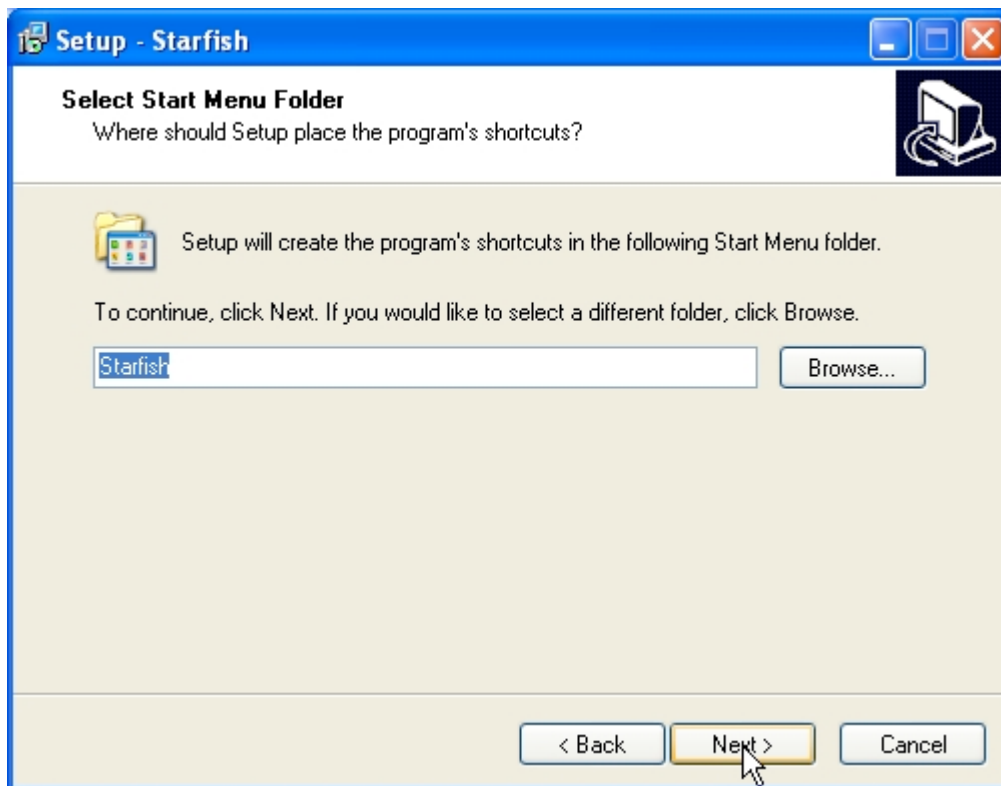
Running the setup executable will install the necessary firmware, driver, and plugins for third-party applications.



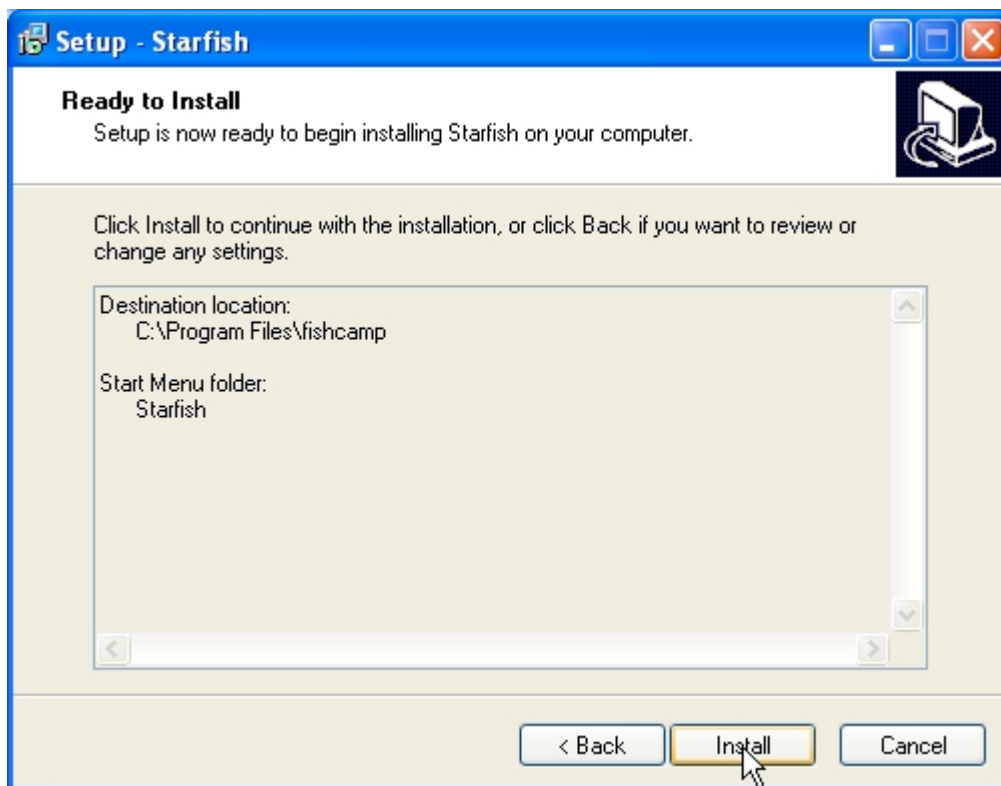
After launching the setup executable, the screenshot above will be the first screen displayed letting you know which driver version is going to be installed.



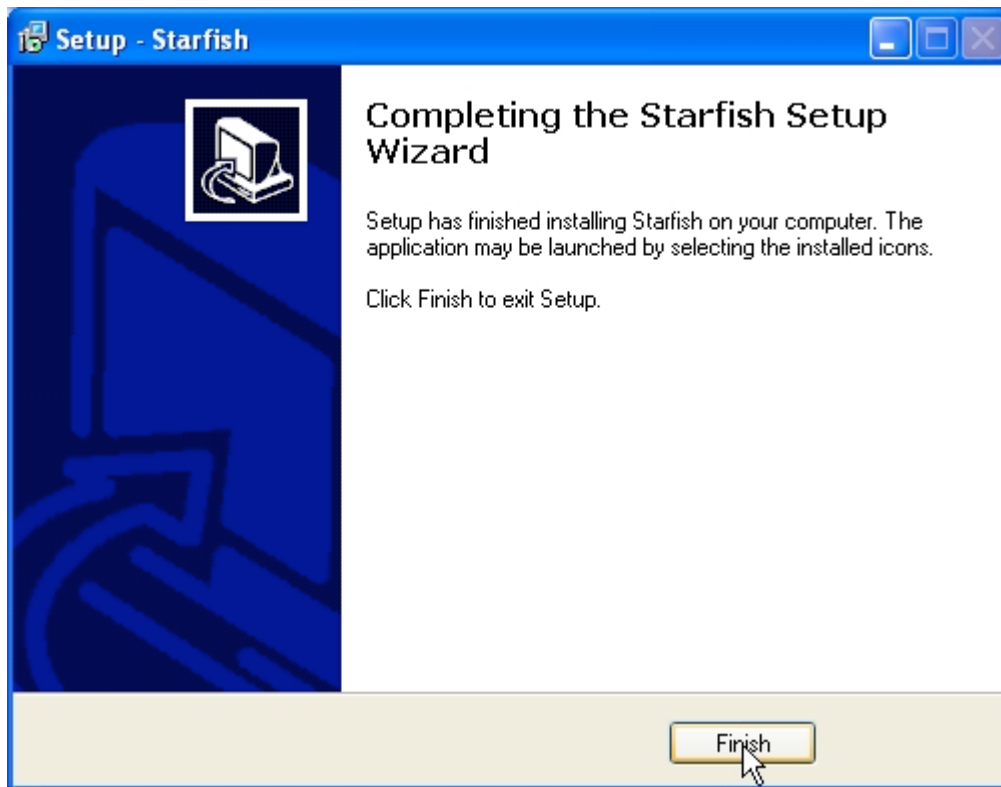
After clicking the 'Next' button from the previous dialog, you will be presented with a location to install the software. However, it is **important** to use the default 'fishcamp' directory as this is where the driver expects the firmware to be located for the camera.



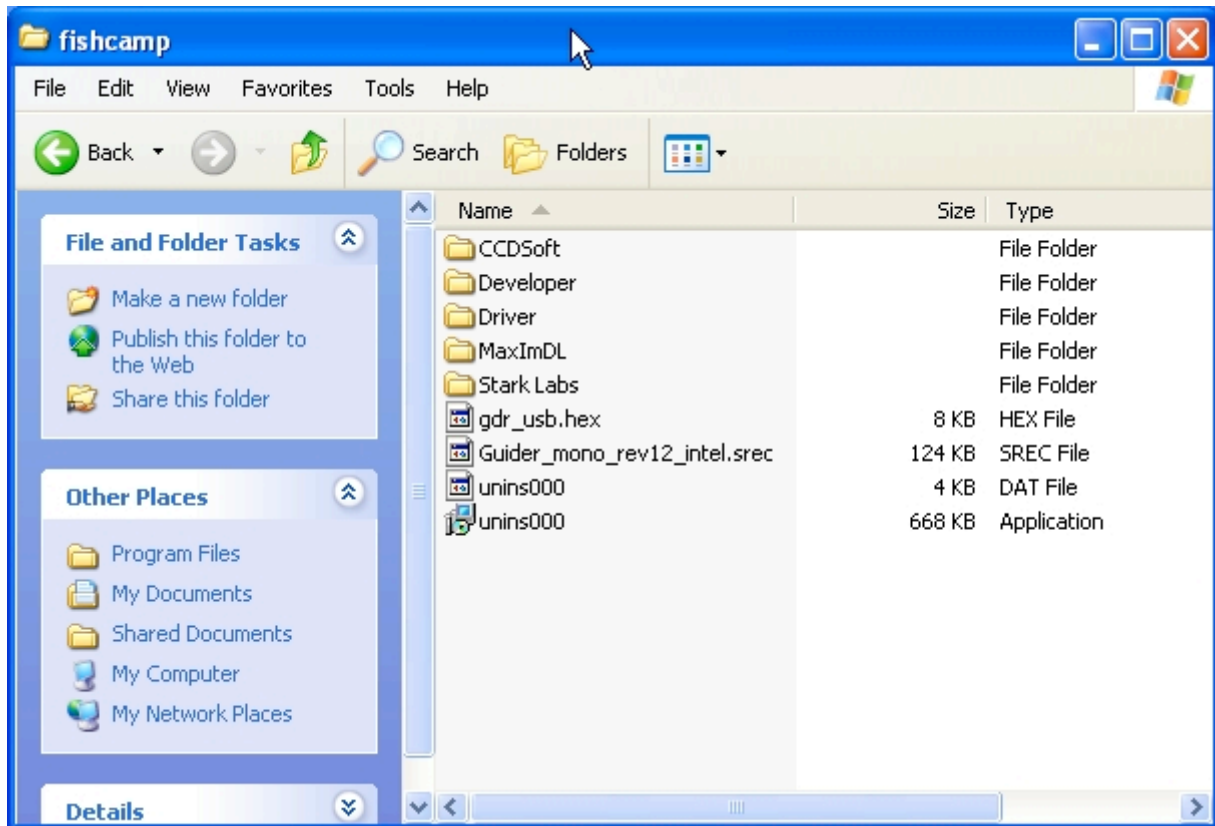
This dialog allows you to specify the directory of the start menu's shortcuts.



After setting the installation parameters, all that is left is to click the 'Install' button to finish the setup.



After the installation is completed, this dialog will show to let you know the setup was successful.



After the setup has finished, there should exist a 'fishcamp' directory in the Program Files folder. The contents should resemble the screenshot above. The latest camera plug-ins for CCDSoft and MaxImDL will be in the respective folders. The latest applications from Stark Labs will also be there.

Step 2:

After installing the setup executable, it is now time to plug in the camera to one of your computer's USB 2.0 ports to install the driver. In order for Windows to install the proper driver, it is necessary to perform a few extra steps instead of letting Windows try to find the software applicable to the hardware.

After plugging in the camera for the first time, Windows will pop-up a "Found New Hardware" dialog.

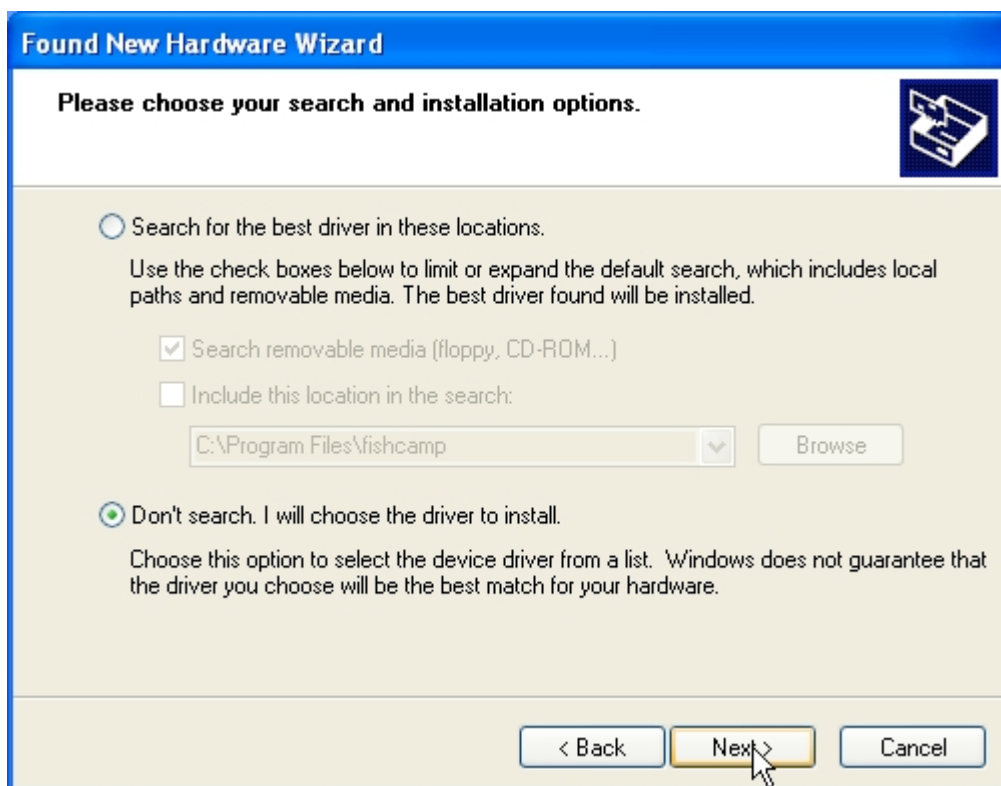
Important Note: *Step 2 with the "Found New Hardware" dialog will occur when plugging in the camera to your computer for the first time, as well as, a second time when running a program that accesses the camera for the first time. Therefore, Step 2 must be completed twice. After which, you will never have to do this again.*



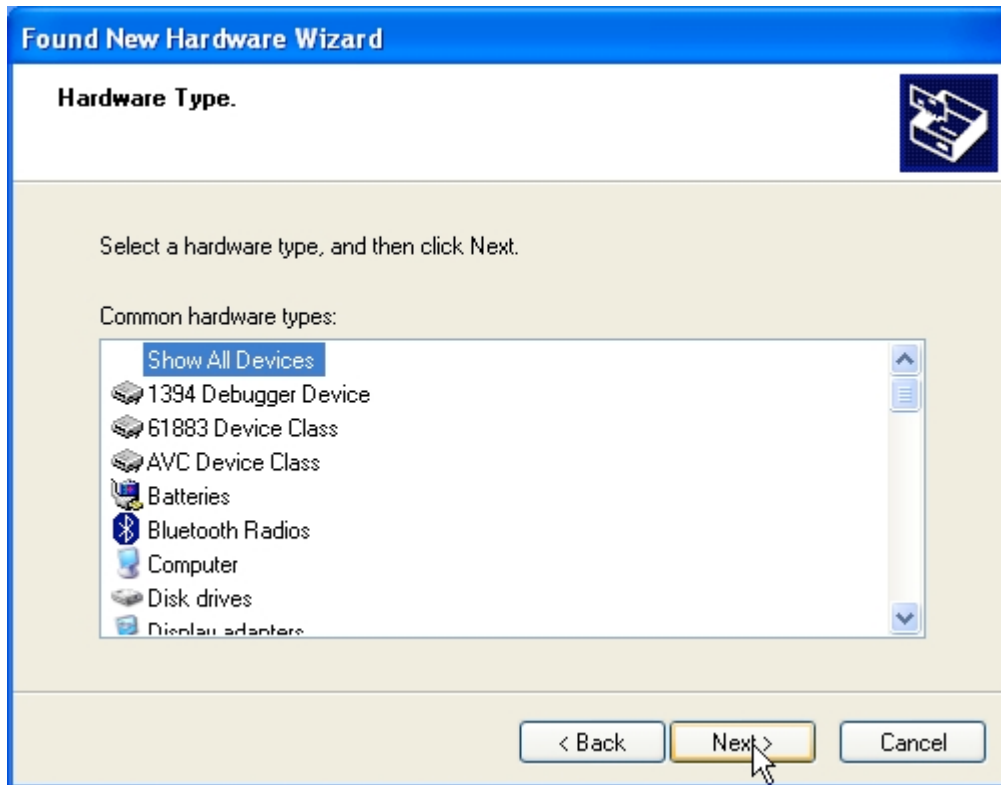
Since we already installed the driver in the fishcamp directory from the previous setup executable, we do not need Windows to connect to Windows Update to search for software. Click the “No, not at this time” radial button and then click ‘Next.’



In order for Windows to install the proper driver, we need to manually specify the location of it. Click the “Install from a list or specific location (Advanced)” radial and then proceed by clicking the ‘Next’ button.



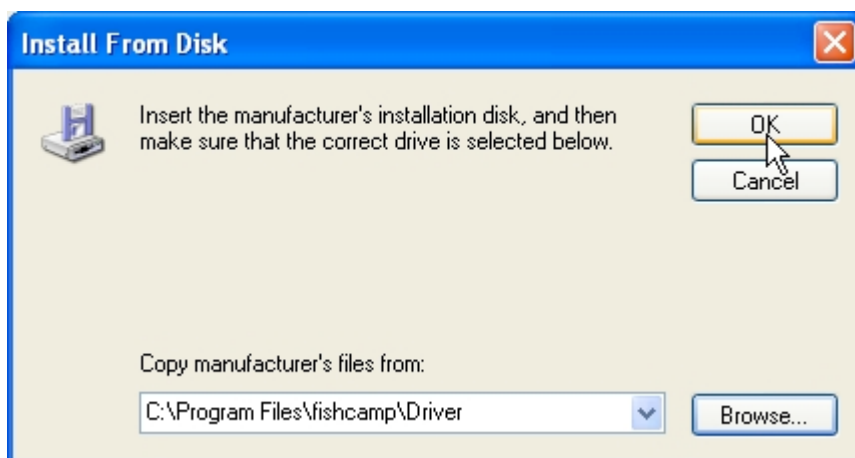
To specify the driver installation directory, select the “Don’t search. I will choose the driver to install.” Then click the ‘Next’ button.



After selecting that you will choose the appropriate driver to install, this dialog will give you a list of possible devices. It is sufficient to just select “Show All Devices” and then click the ‘Next’ button.

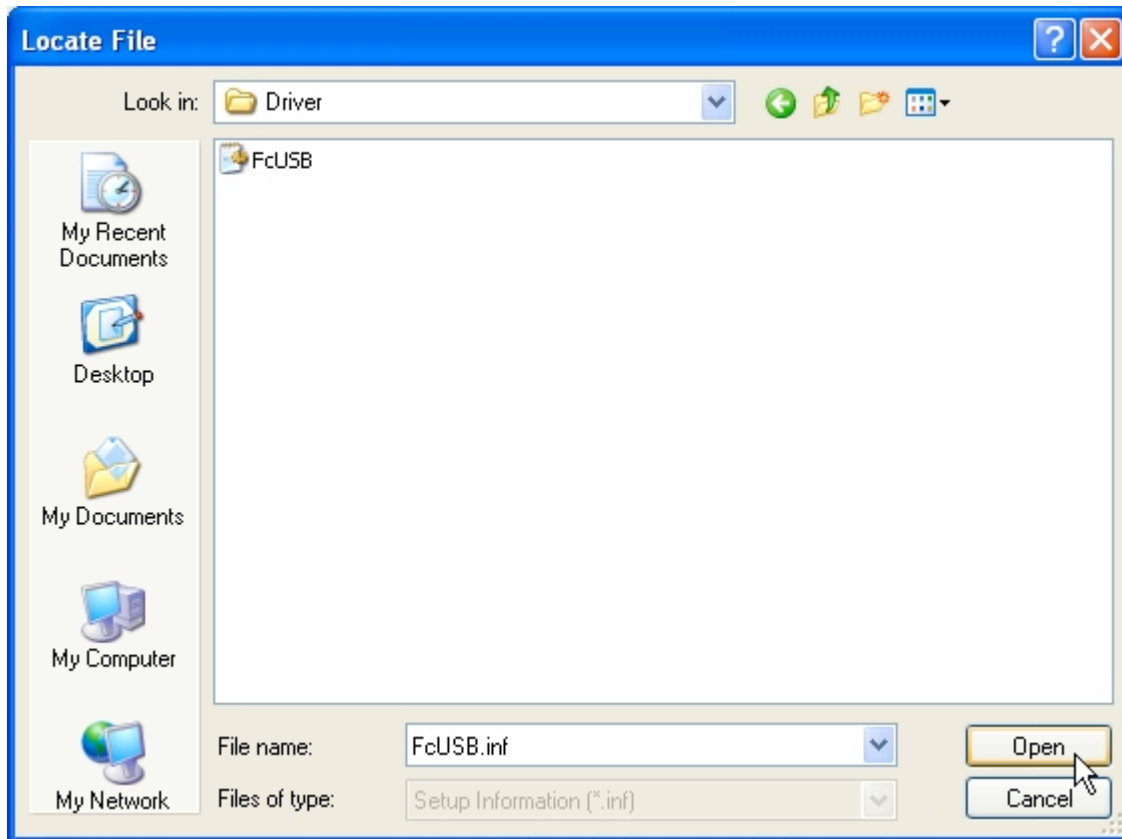


The Starfish driver will not be in the lists presented, so you will need to click the 'Have Disk' button to point to the proper driver.

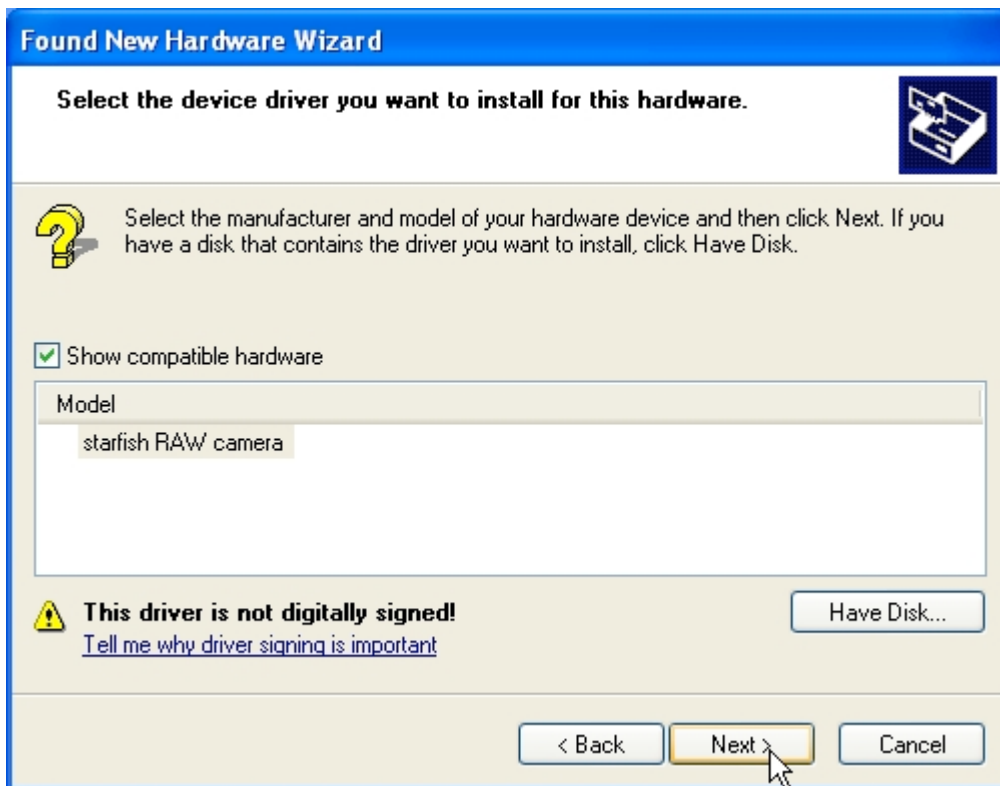


Clicking the 'Have Disk' button will pop-up this dialog to specify the location of the driver. Click the 'Browse' button and navigate to directory:

C:\Program Files\fishcamp\Driver



When browsing to this directory, the hardware setup will let you point to the **FcUSB.inf** file which has all the driver information. Select it and click 'Open.' This will close the above dialog so you see the previous "Install from Disk" dialog. Click the 'Okay' button to continue the setup.



Now that Windows knows the proper driver for the Starfish hardware, you will be presented with this dialog to continue installing the software. Click the 'Next' button.



This dialog will start the hardware installation, however, shortly after the dialog box below will appear.



Just click the 'Continue Anyway' button to allow the installation to continue.



After the installation is complete, you should see this dialog to know that the installation was successful.